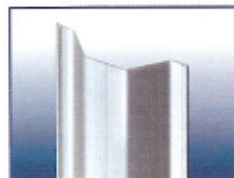


Hat Sheet Pile

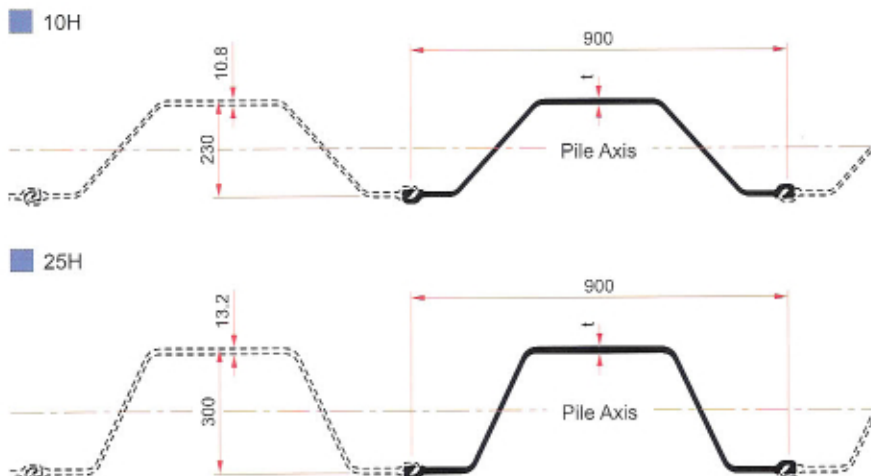
Hat Sheet Pile Press-in Method

900 Hat Piler

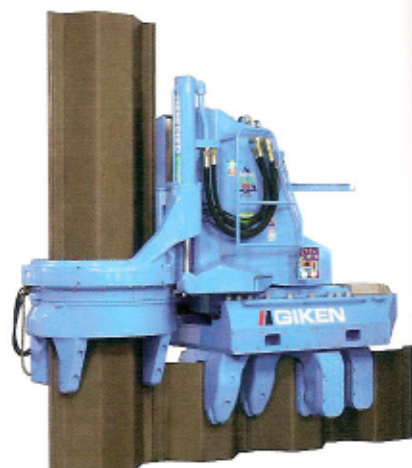


The hat shaped sheet pile has a long history but a modern hot rolled profile has been produced in Japan since 1996 known as the zero pile (SM-J section 600mm width). Its success demonstrated the advantages of the hat profile for press-in operations. Two press-in points on both edges of the pile transfers the press-in force to the pile toe and keeps good control of the direction and orientation of the pile. Using the advantages offered by the zero pile, Giken and Japanese pile manufactures collaborated further in the development of a 900mm wide profile. This is currently the widest single pile section in the world.

Pile Dimensions



ECO900



Up-dated: 9 November, 2007

Section Designation	Section Width (Nominal)		Height of Wall (Nominal)		Thickness (t)		Per 1 m (1 ft) of Wall							
							Sectional Area		Mass		Moment of Inertia		Section Modulus	
	mm	in	mm	in	mm	in	cm ² /m	in ² /ft	kg/m ²	lb/ft ²	cm ⁴ /m	in ⁴ /ft	cm ³ /m	in ³ /ft
10H	900	35.43	230	9.1	10.8	0.46	122.2	5.8	96.0	19.7	10500	76.9	902	16.8
25H	900	35.43	300	11.8	13.2	0.52	160.4	7.6	126.0	25.8	24400	178.7	1610	29.9

Nucor-Yamato PZ27 is also applicable to the ECO900 as well as Japanese hat piles.

Paired PZ27	914	36.00	305	12.0	9.5	0.38	168.1	7.9	131.8	27.0	25200	184.2	1620	30.2
-------------	-----	-------	-----	------	-----	------	-------	-----	-------	------	-------	-------	------	------

