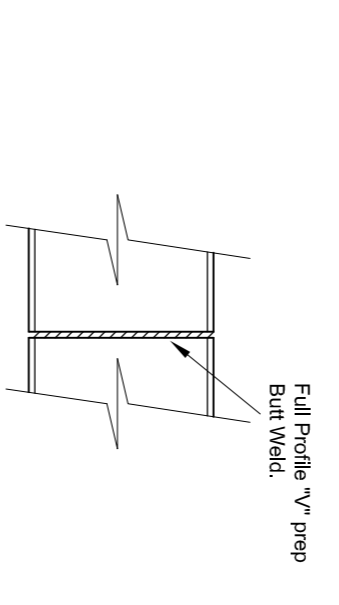
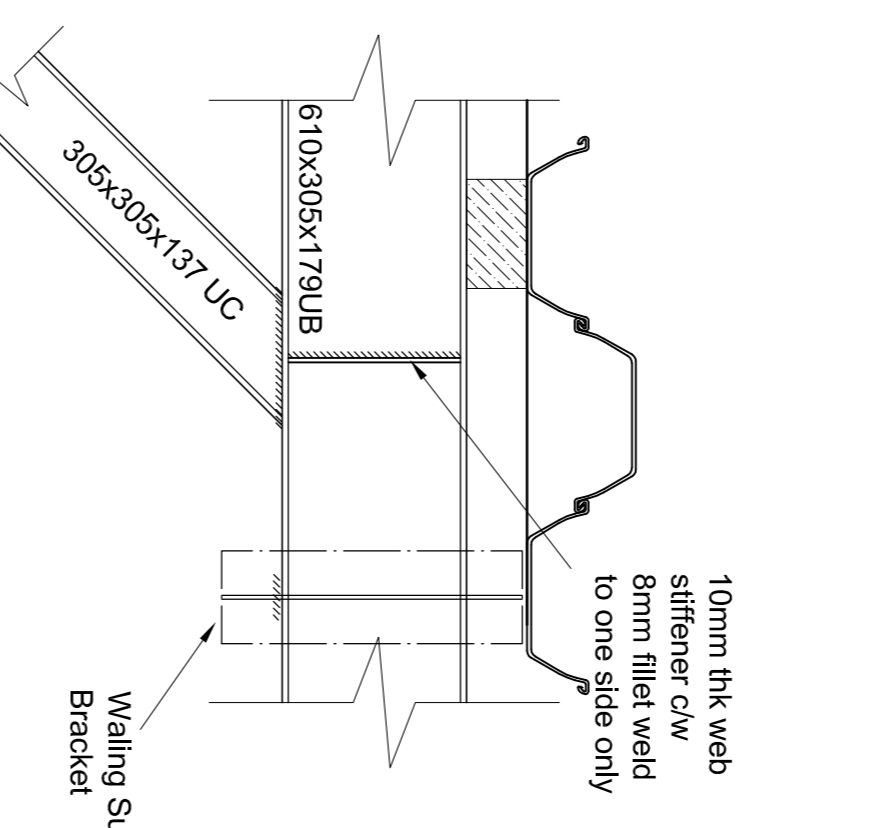
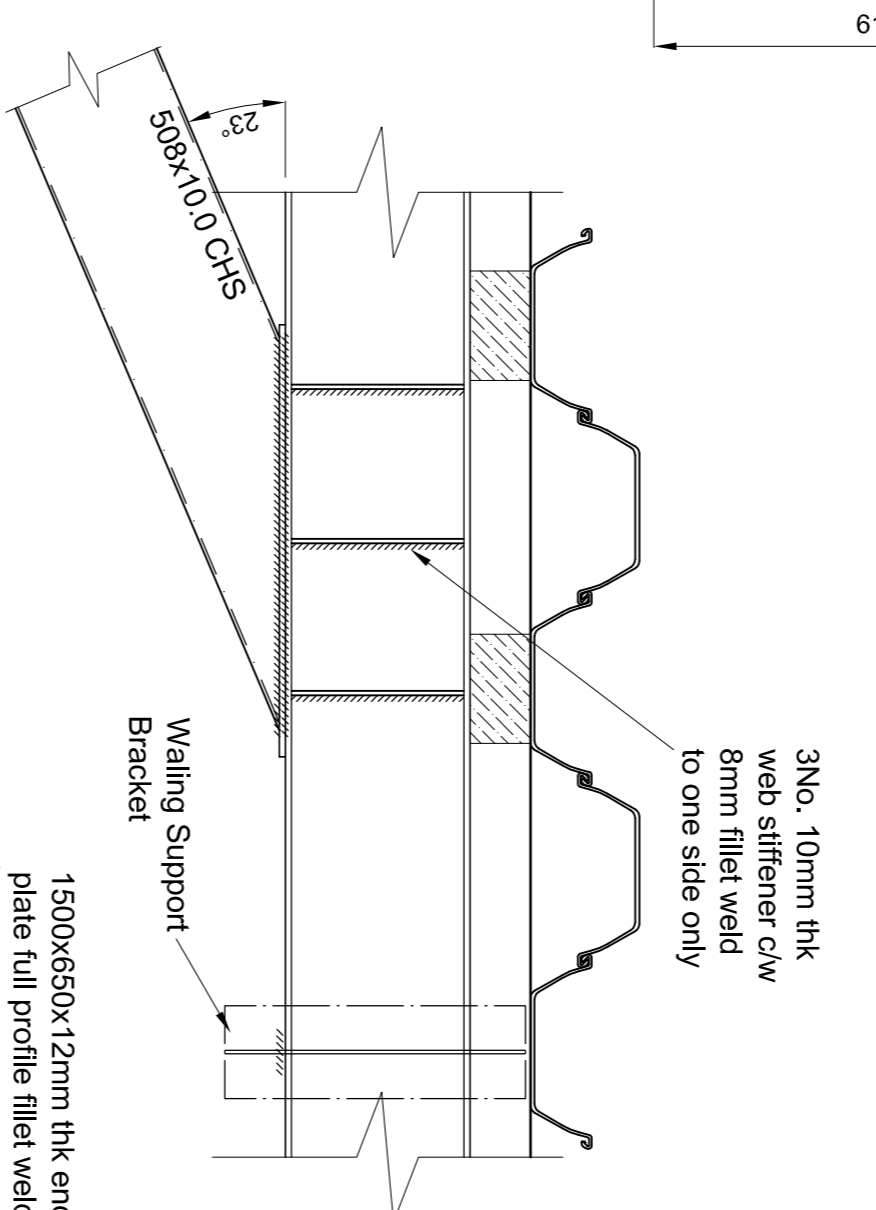
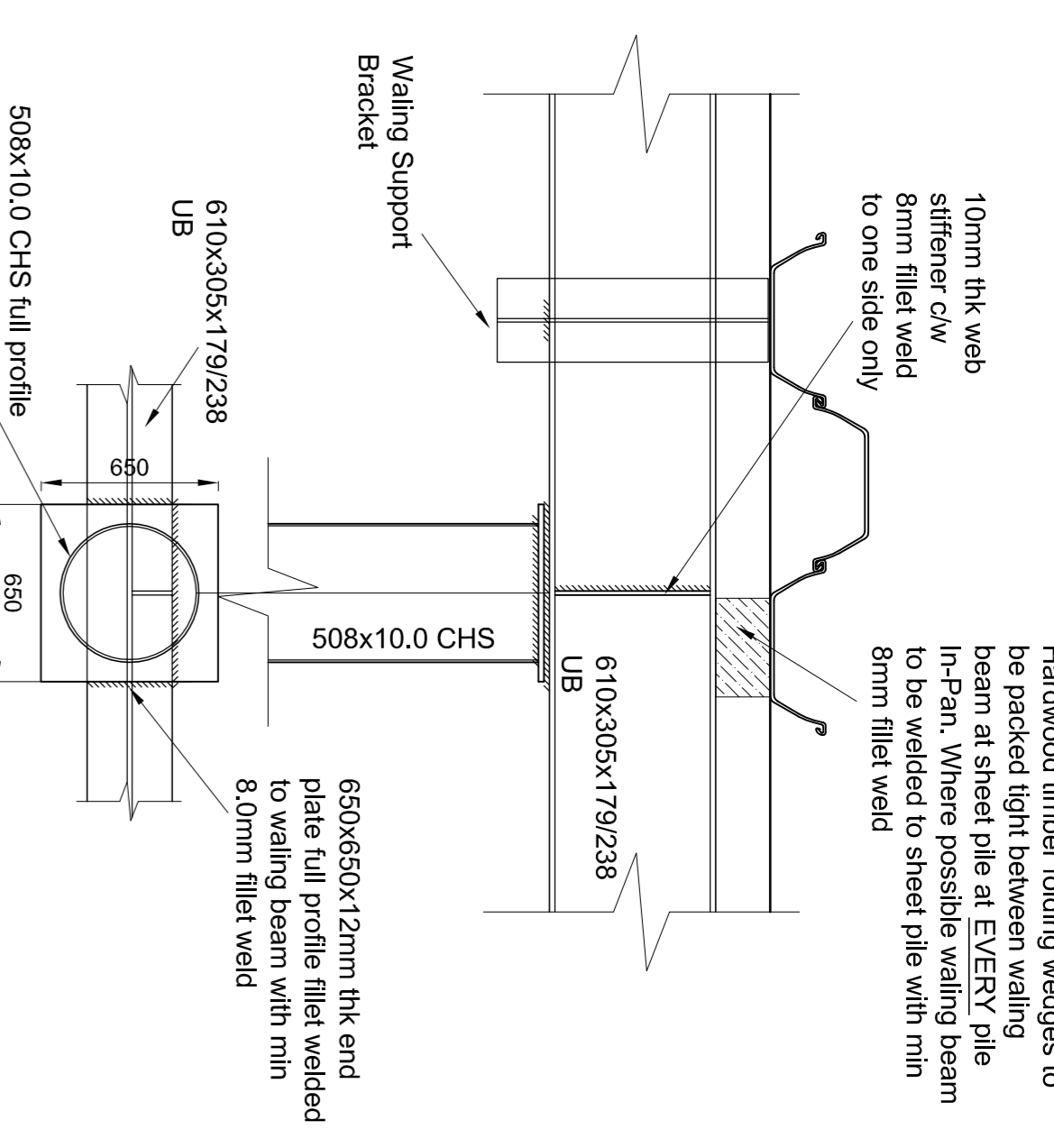
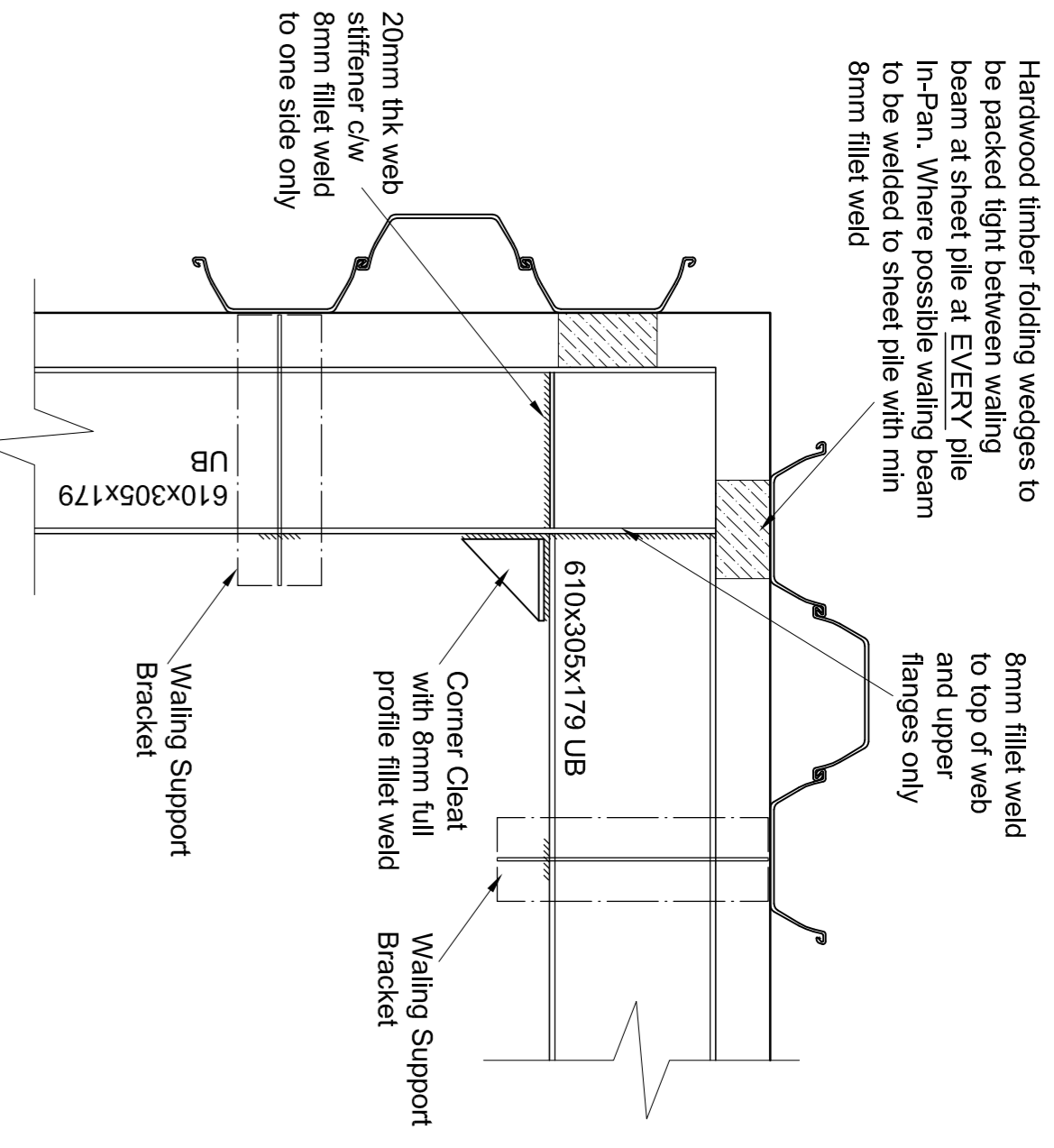
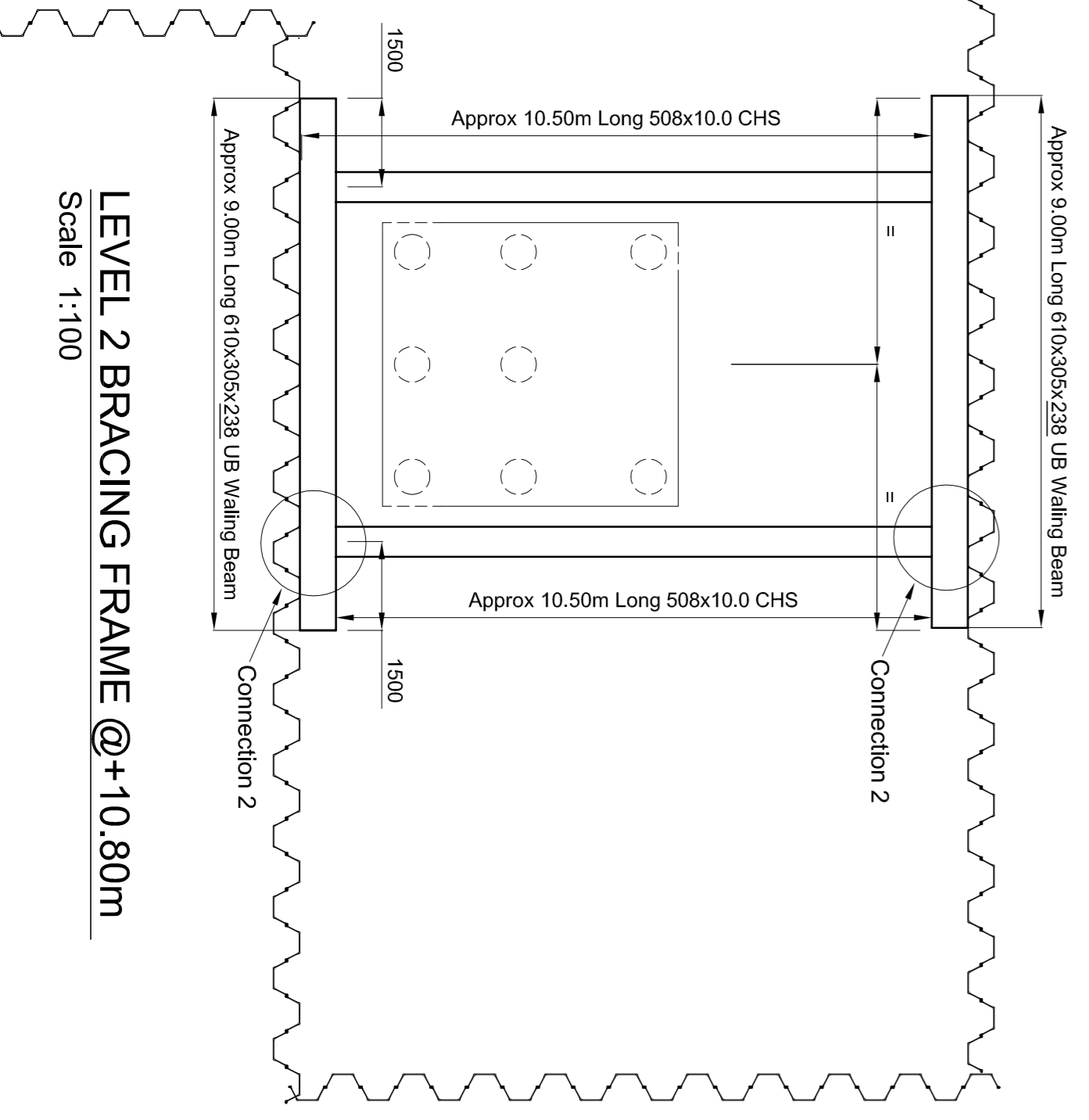


- NOTES**
- See also SPUK Method Statement.
 - See also SPUK Design Report.
 - Sitting out by others.
 - Pile numbers, wall plan lengths and pile orientations indicated are indicative only and are subject to rolling and installation tolerances.



TYPICAL SPLICE DETAIL
Scale 1:25



Client: SKANSKA			
Project: ASTRA ZENECA			
Drawing Title: SHEET PILING TEMPORARY BRACING GA DRAWING AND SECTIONS			
C	09/11/15	Pile line amended as requested by Client	SD
B	06/10/15	Working Space revised	SD
A	18/09/15	FRST ISSUE-FOR REVIEW	SD

Scale @ A1:	Shown	Drawn by:	S Duffon	Checked:	
Original Size A1	E15145/BR/01	Revision:	C		

Oakfield House, Rough Hey Road,
Grimsby, Preston, PR2 5AR
Telephone: 01772 794141
Facsimile: 01772 795151
E-Mail: enquiries@sheepilinguk.com
Web: www.sheepilinguk.com

