

ALL Corners to be fully interlocking clutch bar. Type to suit on-site

Approx 9.00Lin.m. 18No. 12.0m Long GU-23 SSP  
T.O.P Inst = 16.20m

Approx 7.20Lin.m. 12No. 12.0m Long GU-23 SSP  
T.O.P Inst = 16.20m

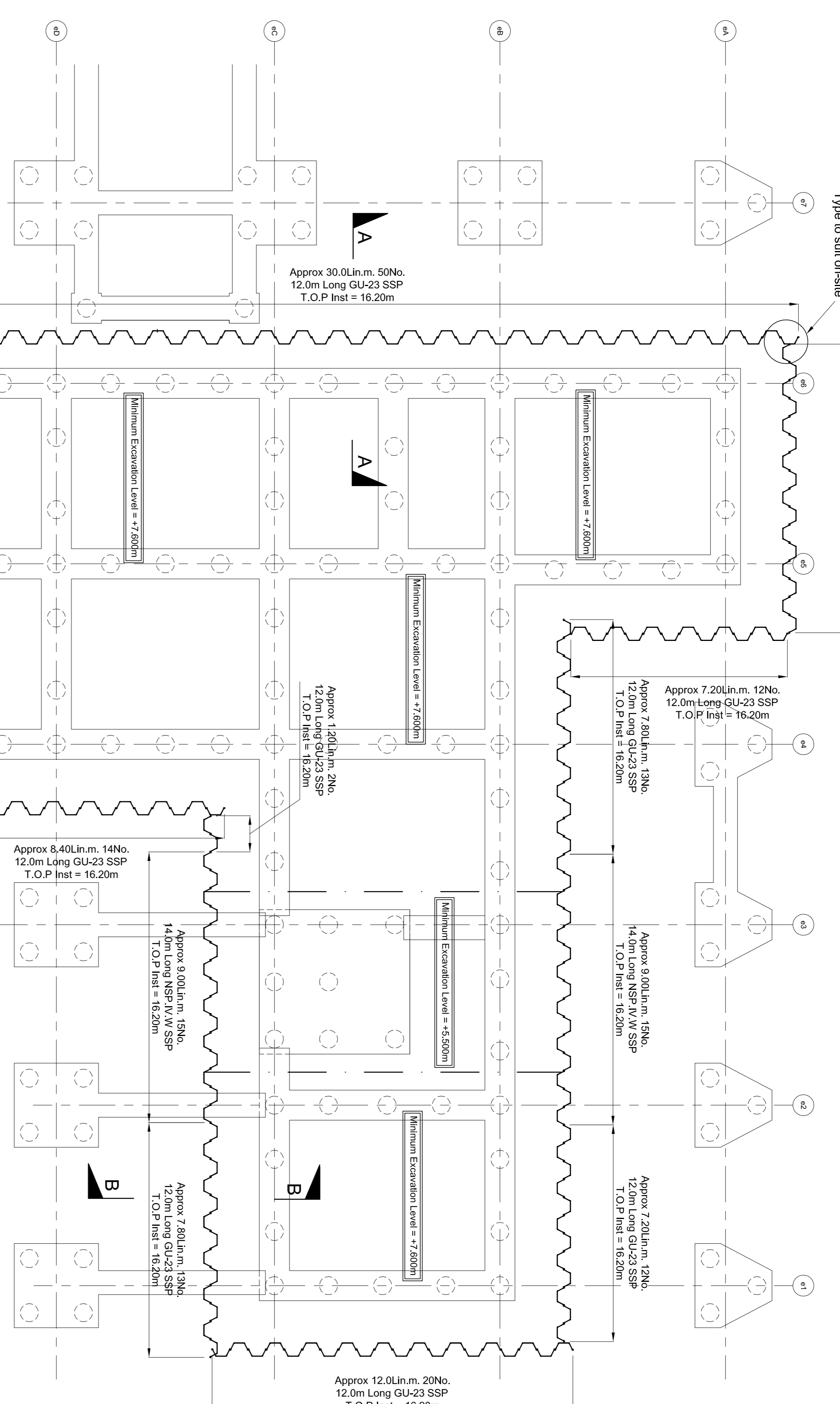
Approx 7.80Lin.m. 13No. 12.0m Long GU-23 SSP  
T.O.P Inst = 16.20m

Approx 9.00Lin.m. 15No. 14.0m Long NSP IV/W SSP  
T.O.P Inst = 16.20m

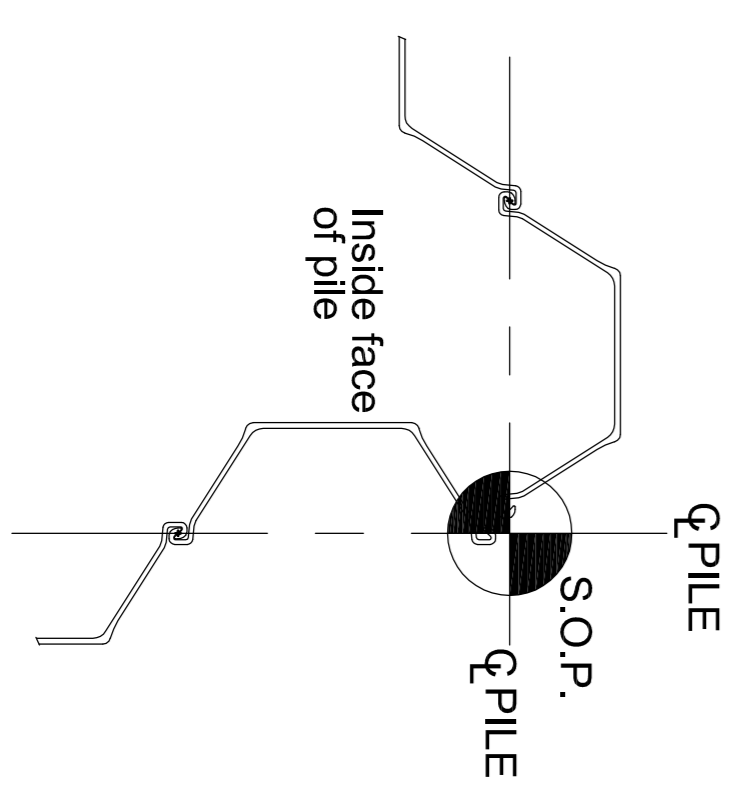
Approx 7.20Lin.m. 12No. 12.0m Long GU-23 SSP  
T.O.P Inst = 16.20m

Approx 7.20Lin.m. 12No. 12.0m Long GU-23 SSP  
T.O.P Inst = 16.20m

Approx 12.0Lin.m. 20No. 12.0m Long GU-23 SSP  
T.O.P Inst = 16.20m

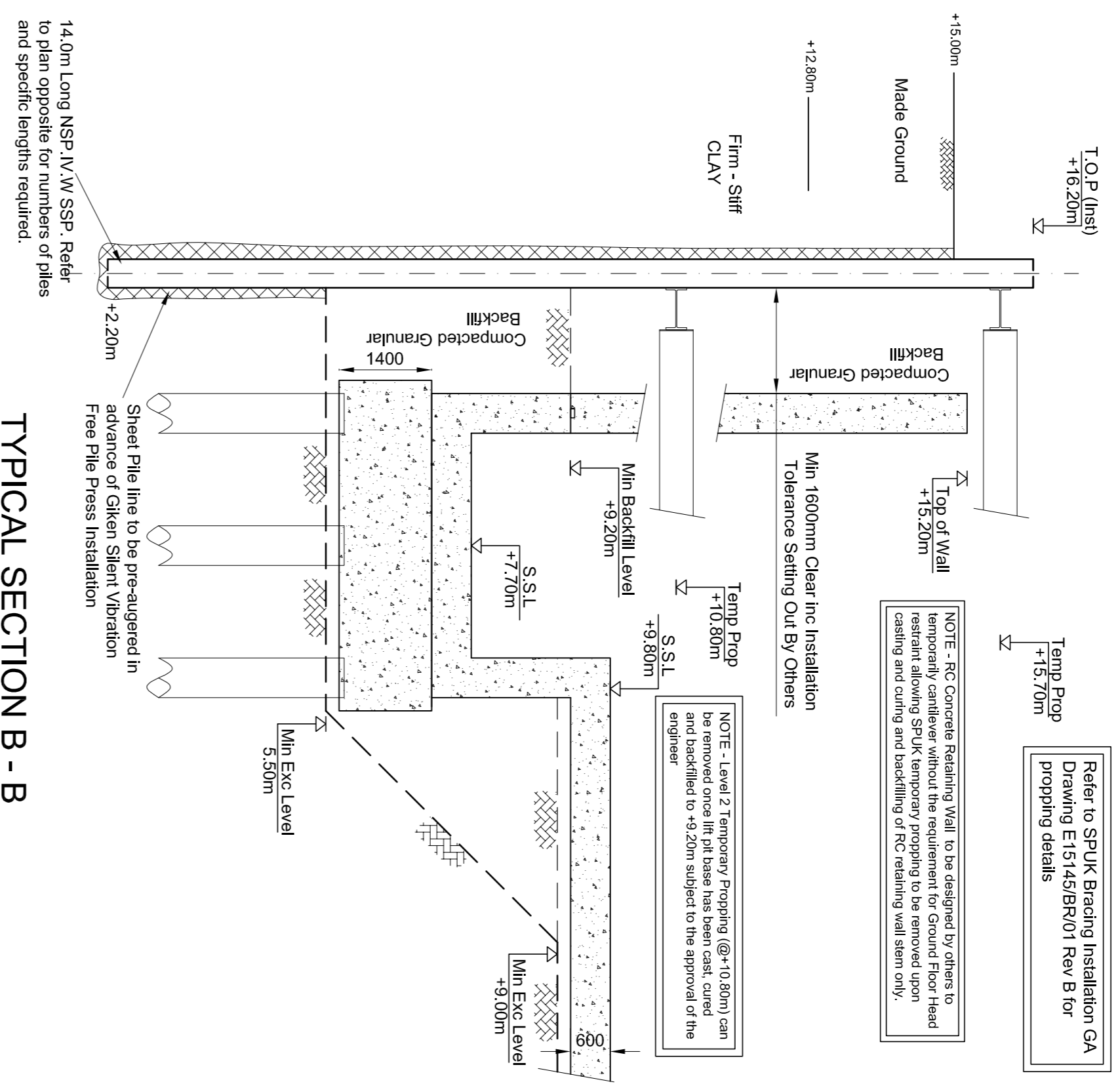


PLAN ON PROPOSED SHEET PILING  
Scale 1:100

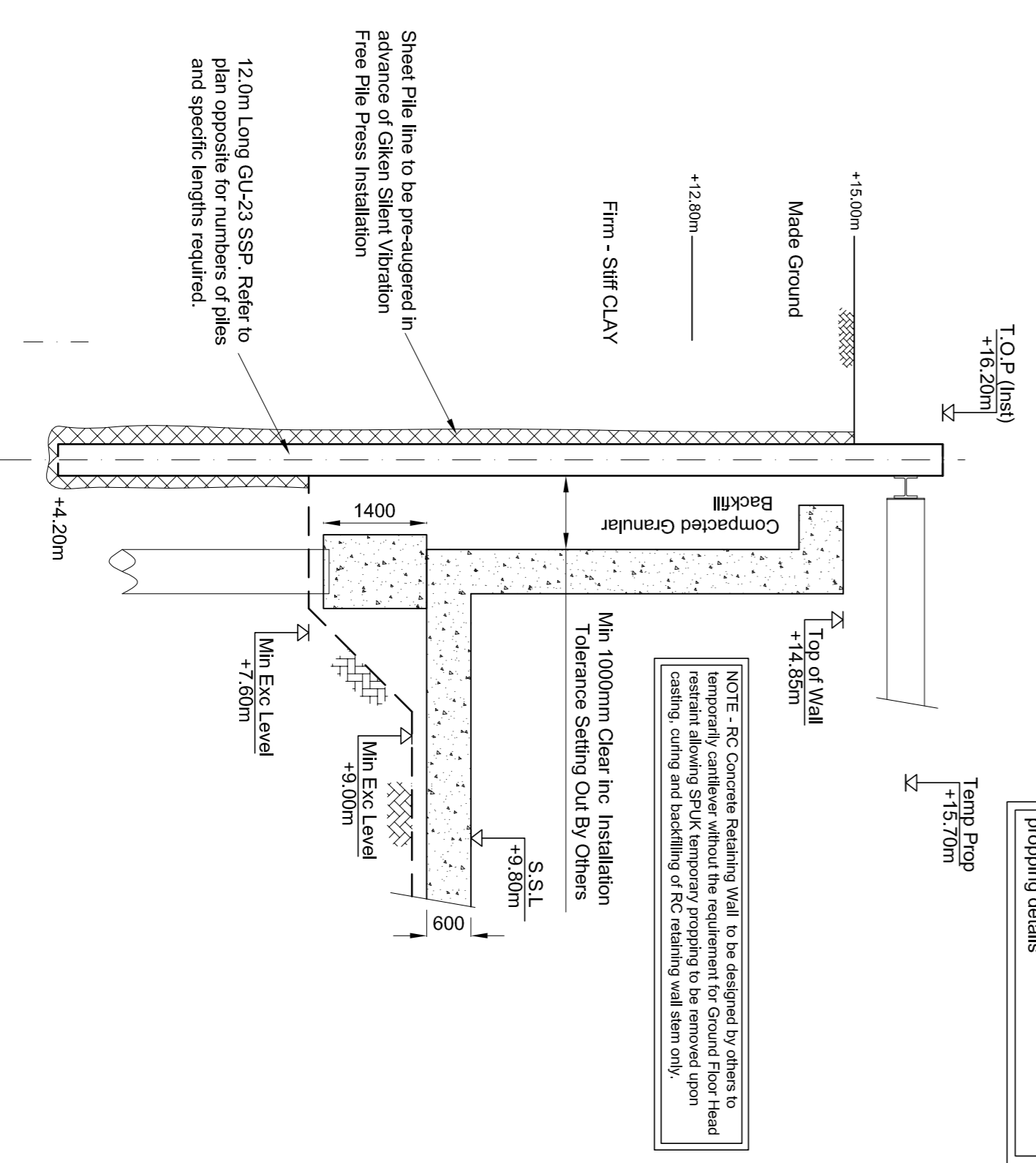


SETTING OUT DETAIL  
NTS

- NOTES
- See also SPUK Method Statement.
  - See also SPUK Design Report.
  - Setting out by others.
  - Pile numbers, wall plan lengths and pile orientations indicated are indicative only and are subject to rolling and installation tolerances.



TYPICAL SECTION A - A  
Scale 1:75



TYPICAL SECTION B - B  
Scale 1:75

Refer to SPUK Bracing Installation GA Drawing E15145/BR01 Rev B for propping details

C	09/11/15	Pile line amended as requested by Client	SD
B	06/10/15	Working Space revised	SD
A	18/09/15	FRST ISSUE-FOR REVIEW	SD

Client : SKANSKA

Project : ASTRA ZENECA

Drawing Title : SHEET PILING INSTALLATION GA DRAWING AND SECTIONS

Scale @ A1 :	Shown	Drawn by :	S Duffon	Checked :
Original Size A1	E15145/GA/01	Revised :	C	

Oakfield House, Rough Hey Road,  
Grimsargh, Preston, PR2 5AR  
Telephone: 01772 794141  
Facsimile: 01772 795151  
E-Mail: enquiries@sheepilinguk.com  
Web: www.sheepilinguk.com

