

 **GIKEN**

SILENT PILER **F201**

for U Sheet Piles
400-600mm wide



Modular model applicable to U Sheet Piles (400-600mm wide)

SILENT PILER F201

Silent Piler F201

Flexible and Functional Formula

The F201 features a new modular design developed by optimising all the parts and drastically modifying the structure, shape, and material. Not only are the main component parts more versatile, it is also equipped with a cutting-edge control system, and realising high functionality and longer operation life.

Modular Base Components

Leader Mast
Slide Frame
Saddle
Clamps

Hose Reel

Attachment

Pile Auger
• for 400mm wide
• for 500-600mm wide

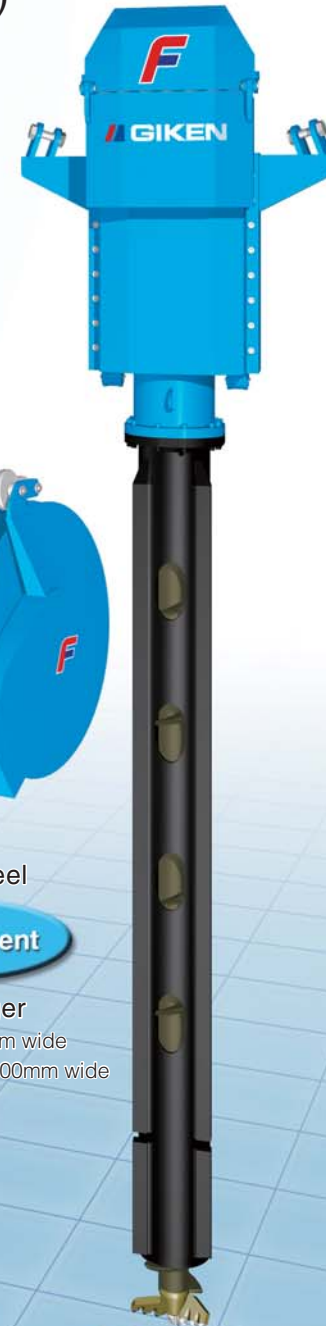
Compatible with
Various Types of Chuck

400mm wide
Standard Mode
Chuck

400mm wide
Super Crush Mode
Chuck

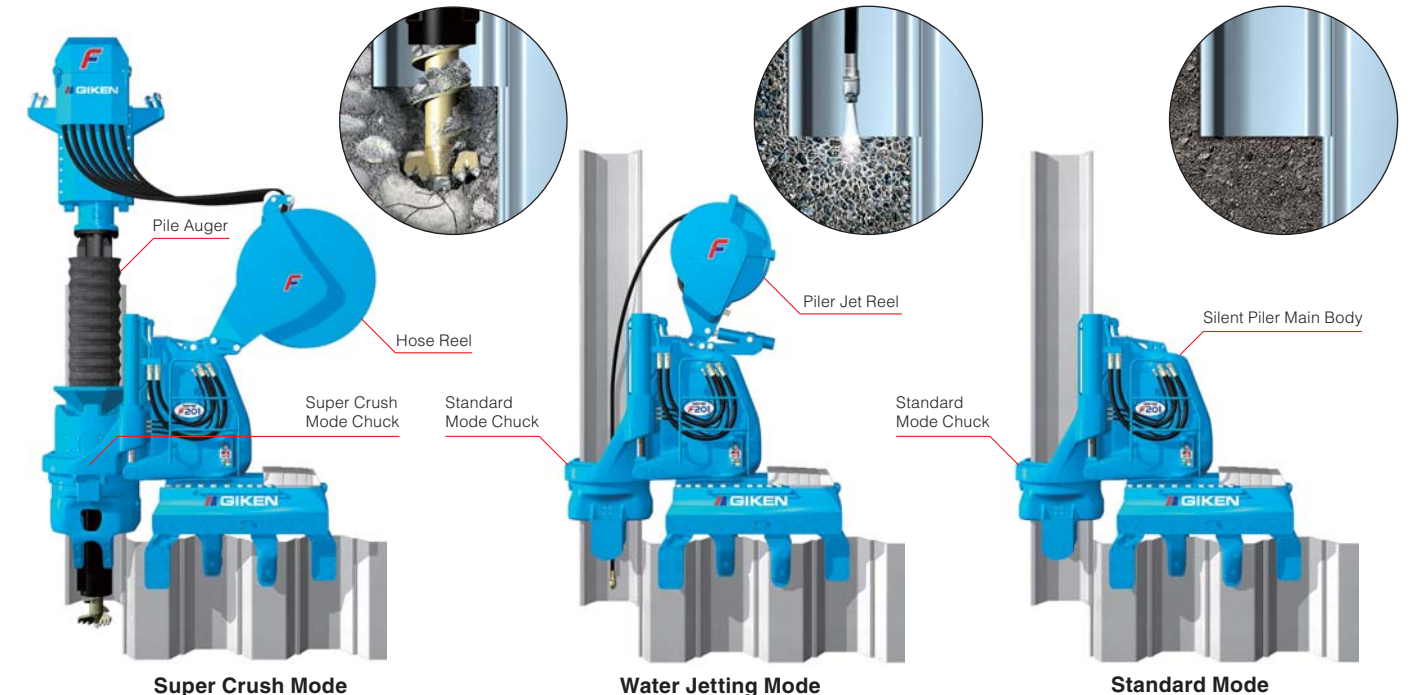
500,600mm wide
Standard Mode
Chuck

500,600mm wide
Super Crush Mode
Chuck



1 Applicable to 400-600mm wide U Sheet Pile and soft to hard ground conditions

F201 has wider adoptability and is applicable to Standard Mode, Water Jetting Mode, and Super Crush Mode and 400mm, 500mm and 600mm wide U sheet pile by changing the chuck and chuck frame, and equipping suitable attachments.



SPT N Values

50

25

0

2 Longer Operational Life and Higher Functionality by New Control System

The new control system manages the position of the press-in machine and controls load generation from press-in work during operation, maximising the durability of each part. Also, control of the machine is remarkably improved by the Press-in Force Control System and the Phaseless Linear Auger Torque Control System.



Pile width corresponding to the Chuck
is automatically detected.

Position of the Press-in Machine is
automatically detected

Up/Down Stroke Force is optimised.

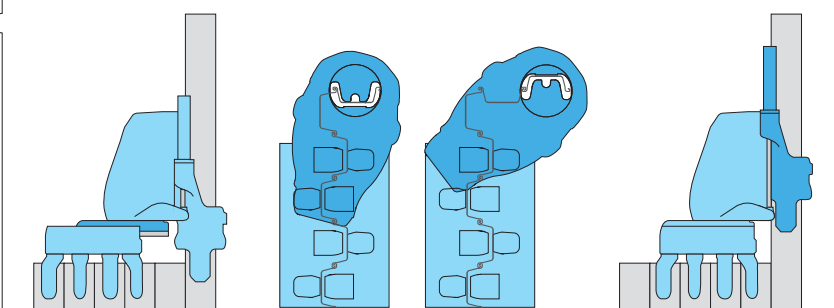
Maximum Up/Down
Stroke Force
is regulated.

Load applied to Silent Piler
can be reduced.

■ Secondary Piling

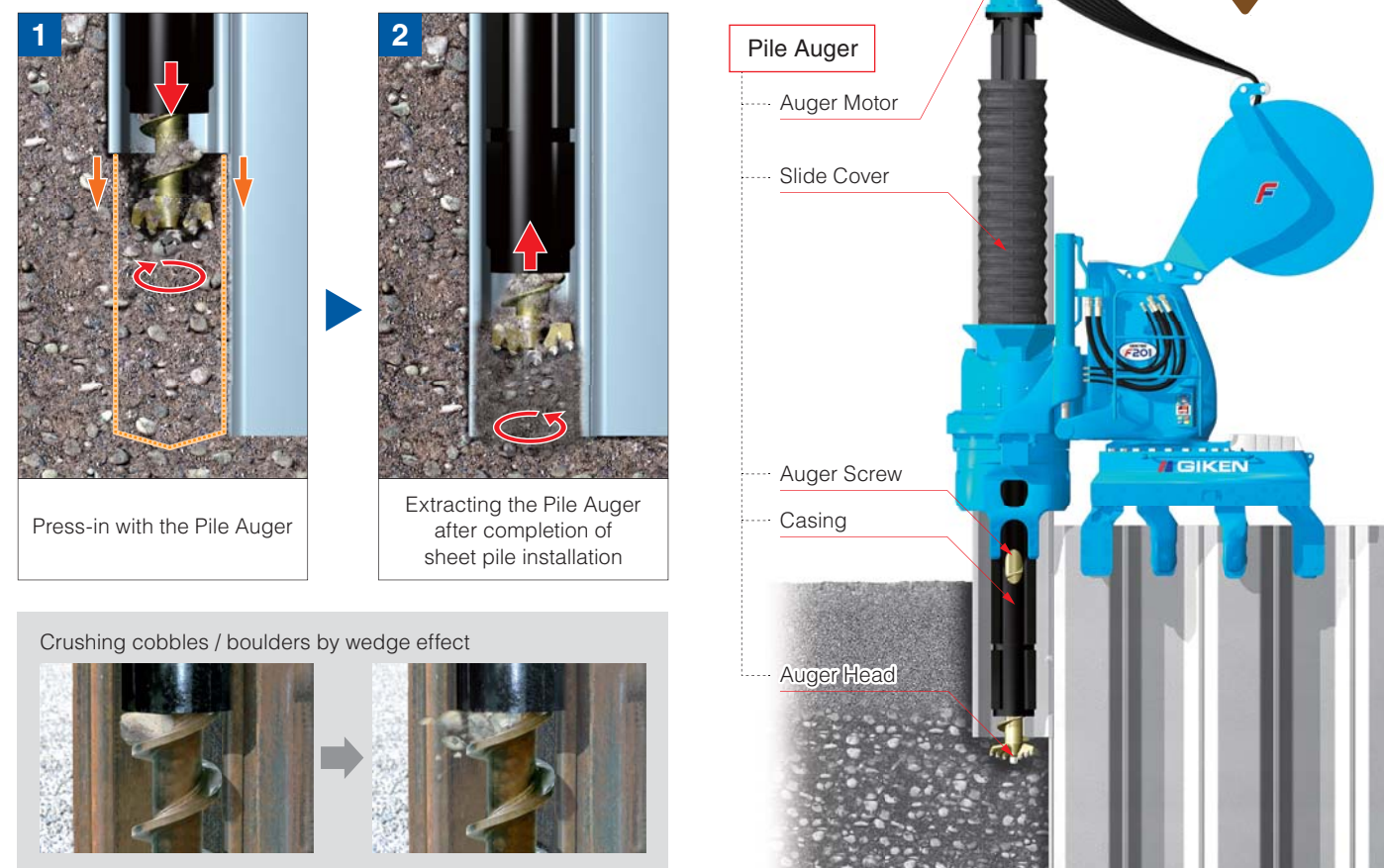
■ Corner Piling

■ Raised Chuck



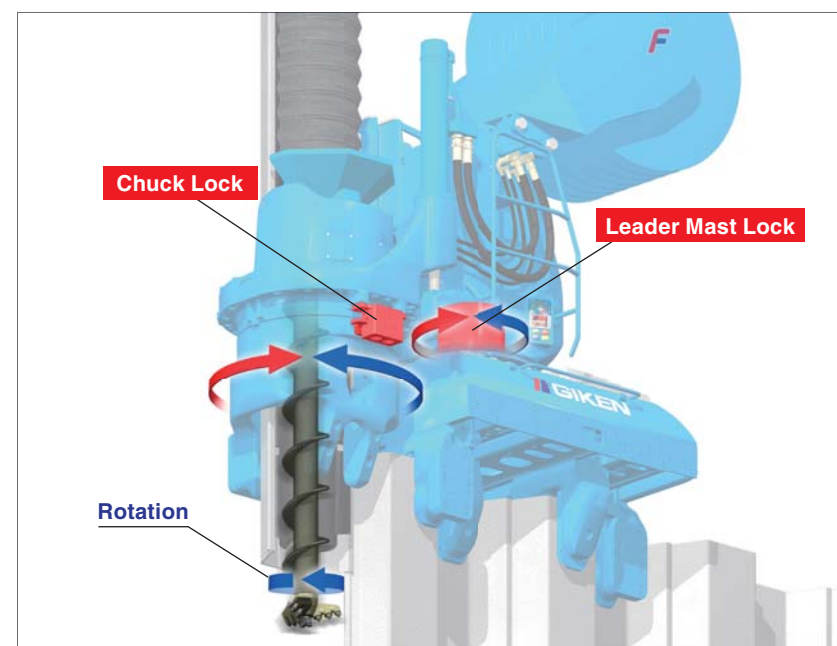
3 Pile Installation into Hard Ground

The "Pilot Coring Theory", GIKEN's original theory, makes the Hard Ground Press-in Method able to install sheet piles into difficult ground conditions such as gravelly soil and cobble or boulder mixed soil without losing the advantages of the Press-in Method. The augering area can be reduced to assist pile installation, minimising volume of spoil and disturbance to the soil strata. Hence, high bearing capacity is available from sheet piles which are installed by the Hard Ground Press-in Method.



Locking Function

Lock functions in the leader mast, chuck and clamps secure Silent Piler against drilling torque and increase drilling efficiency and accuracy of pile installation.



4 Outstanding Environmentally-Friendly Design

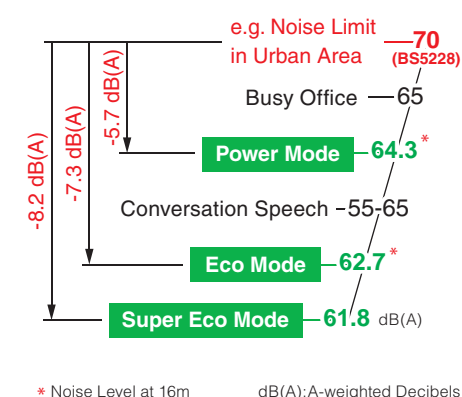
Low Emission Engine

The Power Unit of the F201 is a new generation model and has environmentally-friendly specifications. It is designed with strict concepts for clean emissions with high combustion efficiency and GIKEN's original hydraulic control technologies.



Ultra Low Noise Level

It clears allowable construction noise levels in many industrialised countries.



Standard Application of Biodegradable Oil

The F201 uses bio-degradable Piler Eco Oil and Piler Eco Grease. Hence, if hydraulic oil or grease is spilled into soil or water, there will be no environmental damage to the surrounding ecosystem. In addition, the machines are painted with TX-Free non-leaded paint*.

* Environmentally-friendly paint which does not contain toluene, xylene and lead based pigment.



5 Scientific Execution of Press-in Work & Advanced IT Functions

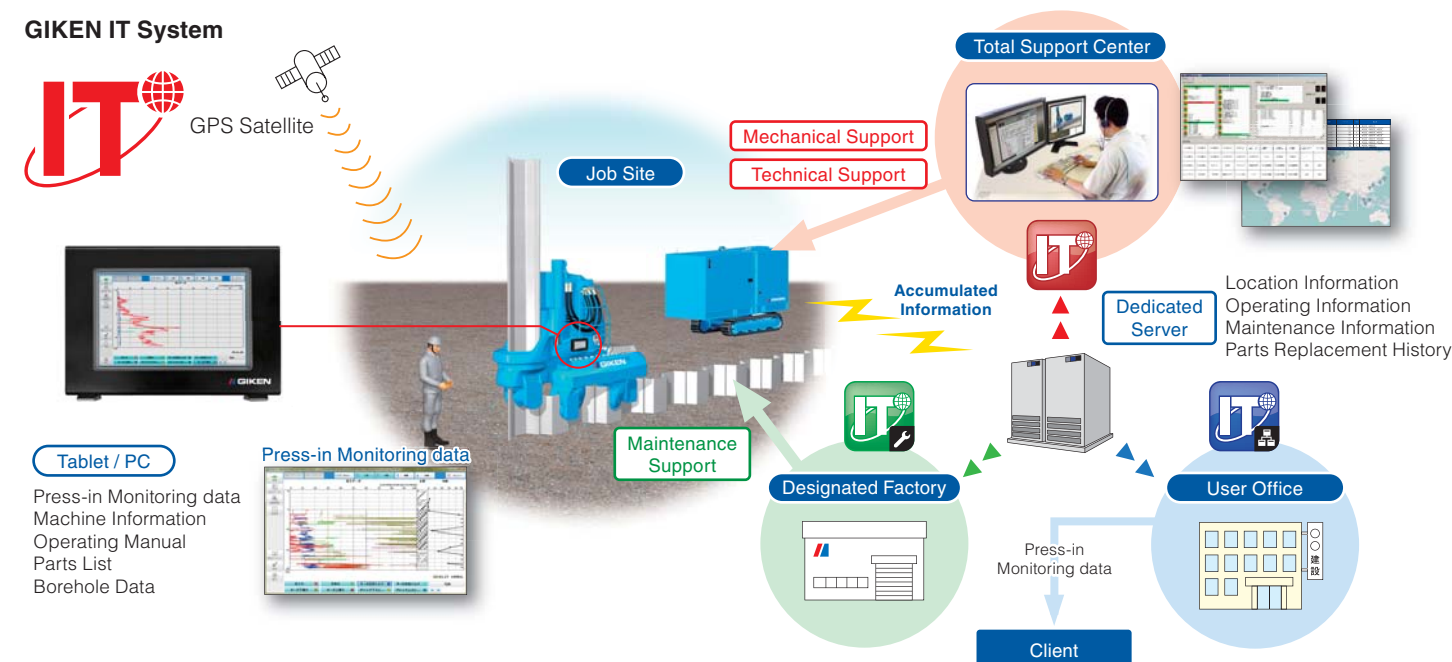
GIKEN IT System

GIKEN's engineers can monitor individual Silent Pilers, such as operating condition, maintenance records and location. Quick advice for any technical troubles is available promptly and appropriate information can also be provided to prevent troubles.

* The system is not available in the countries where authorisation for usage cannot be acquired.

Press-in Monitoring and Data Logging System

Press-in monitoring data can be used for quality control and information modelling of the foundation. Operators are able to keep working while checking data such as press-in force, auger torque, and working hours of press-in work, on a tablet or PC (both optional extras).



Dimensions & Specifications

Super Crush Mode

400mm wide

F201-C400

for 400mm wide Super Crush Mode Chuck

Auger Motor

for 400mm wide Casing Auger

Hose Reel

At Transportation

At Transportation 3675

500mm wide

F201-C500

for 500-600mm wide Super Crush Mode Chuck

for 500,600mm wide Casing Auger

At Transportation 3835

600mm wide

F201-C600

for 500-600mm wide Super Crush Mode Chuck

for 500,600mm wide Casing Auger

At Transportation 3835

Water Jetting Mode

F201-400

Piler Jet Reel JR28

At Extraction

At Transportation

At Transportation 3000

F201-500

At Transportation 2985

F201-600

At Transportation 3170

Standard Mode

F201-400

for 400mm wide Standard Mode Chuck

At Transportation 3500

F201-500

for 500-600 mm wide Standard Mode Chuck

At Transportation 3500

F201-600

for 500-600 mm wide Standard Mode Chuck

At Transportation 3500

F201 Specifications

● Super Crush Mode

Max. Press-in Force	800 kN
Max. Extraction Force	900 kN
Stroke	850 mm
Press-in Speed	0.5 ~ 4.5 m/min
Extraction Speed	1.1 ~ 9.4 m/min
Control System	Radio Control
Mass (Main Body & Hose Reel)	for 400mm wide sheet pile 13160 kg for 500, 600mm wide sheet pile 13660 kg

Hose Reel

HR17C

Pile Auger

PA22

Applicable pile length (Standard)	Max 24 m*
Auger Motor	1850 kg
Mass Casing Auger	for 400mm wide sheet pile 9050 kg for 500, 600mm wide sheet pile 10050 kg
Total Mass	for 400mm wide sheet pile 10900 kg for 500, 600mm wide sheet pile 11900 kg

*Max 30m in special mode

● Water Jetting Mode

Max. Press-in Force	1500 kN
Max. Extraction Force	1600 kN
Stroke	850 mm
Press-in Speed	1.4 ~ 30.0 m/min
Extraction Speed	1.1 ~ 23.2 m/min
Control System	Radio Control
Mass (Main Body & Piler Jet Reel)	for 400mm wide sheet pile 10820 kg for 500, 600mm wide sheet pile 11120 kg

Piler Jet Reel

JR28

Applicable pile length	Standard 17.0 m (Max. 27.0 m)
Mass	820 kg

Piler Jet Reel is an optional item

● Standard Mode

Max. Press-in Force	1500 kN
Max. Extraction Force	1600 kN
Stroke	850 mm
Press-in Speed	1.4 ~ 30.0 m/min
Extraction Speed	1.1 ~ 23.2 m/min
Control System	Radio Control
Mass (Main Body)	for 400mm wide sheet pile 10000 kg for 500, 600mm wide sheet pile 10300 kg

Power Unit

2350

1800

1960

1805

2110

3975

545

Power Unit	EU30013
Power Source	Diesel Engine
Power Mode	230 kW(313 ps)/1800 min ⁻¹
Rated Output Eco Mode	204 kW(278 ps)/1600 min ⁻¹
Super Eco Mode	179 kW(243 ps)/1400 min ⁻¹
Fuel Tank Capacity	500 L
Hydraulic Reservoir	Piler ECO Oil 490 L
Moving Speed	1.4 km/h
Mass	6400 kg (with 20m Hose)

Reaction Stand

Leveling Jack

2020

4650

490

At Transportation 3450

5600

Reaction Stand (with Leveling Jack)

Mass	1900 kg
------	---------

Chuck Mass

Sheet Pile Width	Standard Mode Chuck	Super Crush Mode Chuck
500, 600 mm	2850 kg	3400 kg
400 mm	2550 kg	2900 kg

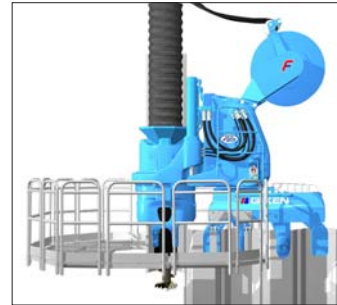
The above specifications are subject to alteration without prior notice

5

6

Accessories

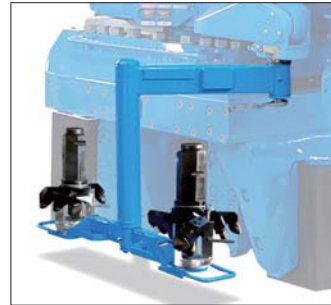
Standard Accessories



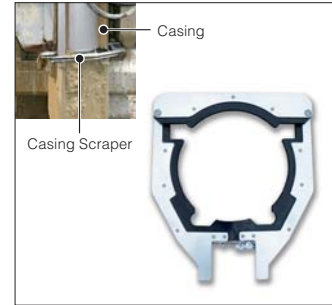
Piler Stage



Chuck Stage *

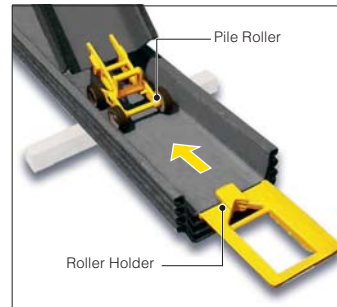


Auger Head Replacement Attachment *

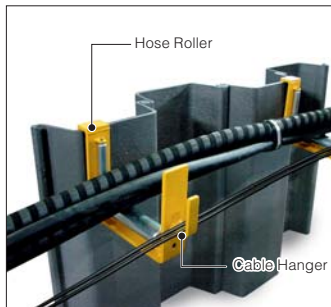


Casing Scraper *

* Available for Super Crush Mode only.



Pile Roller



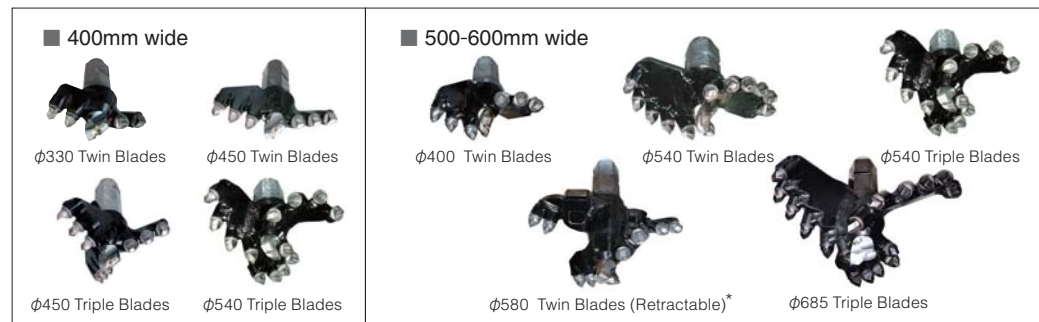
Hose Roller



Pile Laser



Module Box



Auger Head *

* for 600mm wide only

Optional Accessories



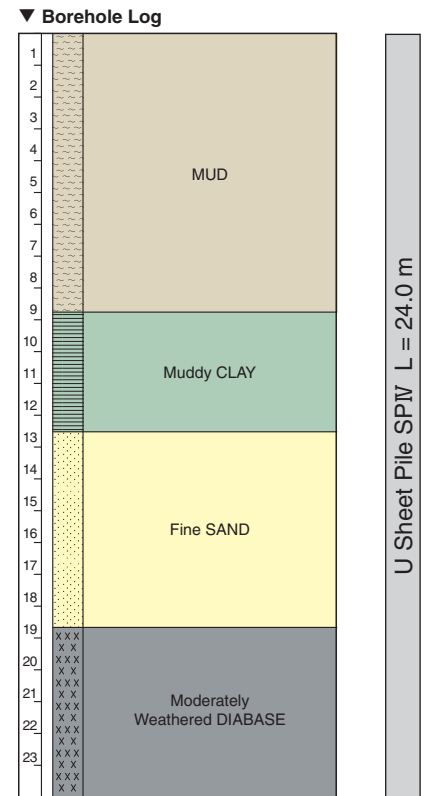
Piler Jet Reel (JR28)

F201 Project Data Sheet

F201 Demonstration Test



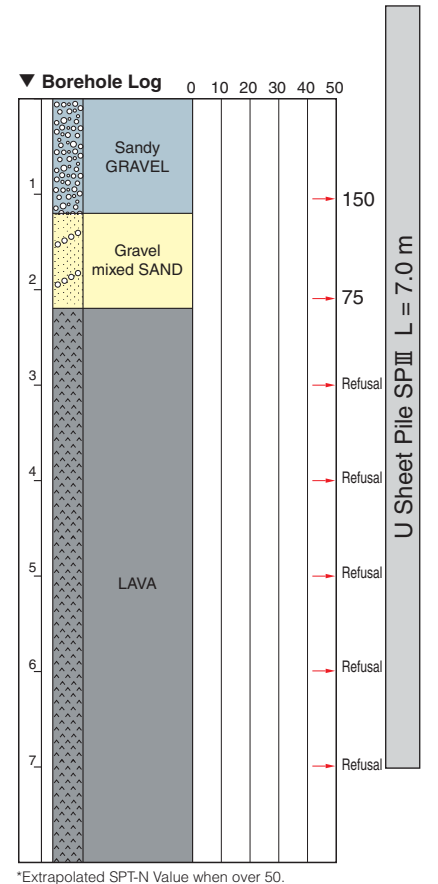
Project : Cofferdam Test Piling
Location : Dong Gang Business District, Dalian China
Period : November 2013 ~ December 2013
Silent Piler : F201
Type of Sheet Pile : U Sheet Pile SP IV
Pile Length : 12m (Standard Mode)
12m, 24m (Super Crush Mode)



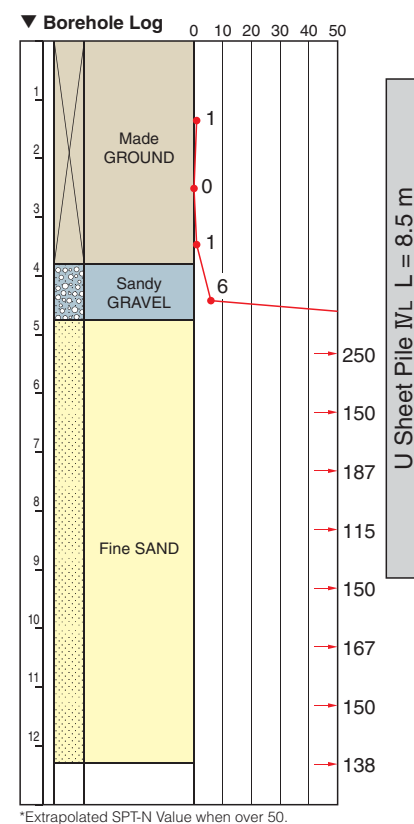
Emergency Land Slide Remedial Works



Project : Emergency Channel Construction Works
Location : Oshima Town, Tokyo
Period : March 2014 ~ May 2014
Silent Piler : F201
Type of Sheet Pile : U Sheet Pile SP III
Pile Length : 7.0 m

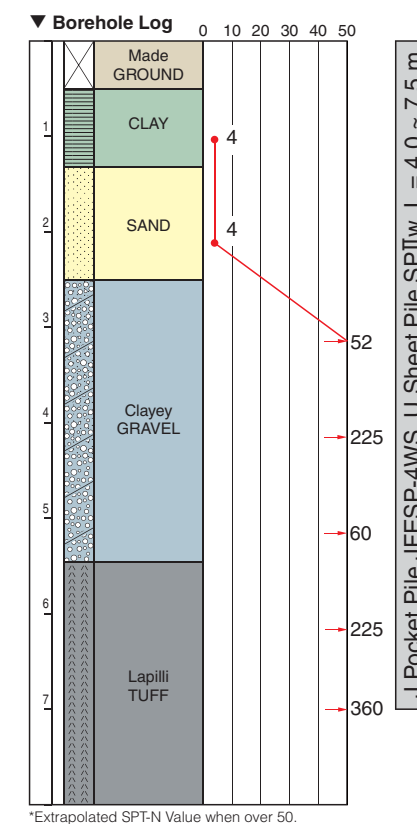


Drainage Restoration Works in Dense Residential Area



Project : Machida City Public Sewer System, Storm-Water Sewer Construction Works
 Location : Machida City, Tokyo
 Period : May 2013
 Silent Piler : F201
 Type of Sheet Pile : U Sheet Pile SP VL
 Pile Length : 8.5 m

Installation of Sheet Pile Cut-off Wall into Hard Ground

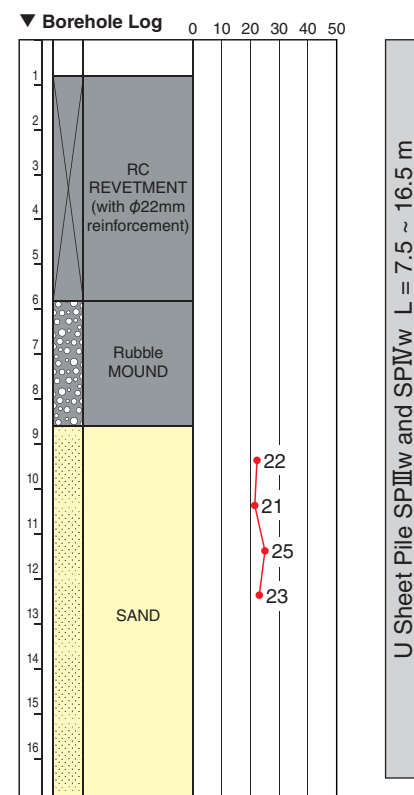


Project : Demolition of Miyagi Prefectural Public Health and Environment Bldg.- Second Phase
 Location : Sendai City, Miyagi
 Period : October 2013 ~ November 2013
 Silent Piler : F201
 Type of Sheet Pile : J Pocket Pile JFESP-4WS, U Sheet Pile SP IIw
 Pile Length : 4.0 ~ 7.5 m

River Dike Disaster Remedial Works



Drilling the existing RC Revetment



Project : Embankment Restoration Work Section 4, Natori River
 Location : Natori City, Miyagi
 Period : September 2013 ~ October 2013
 Silent Piler : F201
 Type of Sheet Pile : U Sheet Pile SP IIIw and SP IVw
 Pile Length : 7.5 ~ 16.5 m

Visit the following URL for more details.

GIKEN Project Leaflet Database
<http://www.gtoss.net/en/pressin-archive>



Data sheets can be searched and downloaded by category.



www.giken.com

GIKEN LTD.

Global Network : Japan, USA, UK, Germany, Singapore, China

International Business Department

3948-1 Nunoshida, Kochi-shi, Kochi 781-5195, Japan

Tel. : +81-(0)88-846-2980 Fax : +81-(0)88-826-5288

Email : international@giken.com

For more contact information, please visit:

<http://www.giken.com/en/contactus/groupcompanies>