



# PileClaw<sup>®</sup>

Installation Equipment



---

605 Molly Ln. STE 150 Woodstock, GA 30189  
800.256.8857 [www.cmilc.com](http://www.cmilc.com)



Driving any sheet piling material to significant depths is a challenging task. PileClaw® Installation Equipment, from CMI, offers a range of solutions developed to increase the likelihood of driving the company's ShoreGuard® and UltraComposite™ synthetic sheet piling to desired depths. PileClaw Installation Equipment's proprietary technology offers 20 years of documented performance. And, all PileClaw Installation Equipment has several quality control and installation advantages.

CMI has decades of experience in providing category leading products. CMI's ShoreGuard and UltraComposite sheet piling have been used to address some of the most challenging flood control, chemical containment, levee seepage and groundwater cut-off projects. Patented 24" and 30" box profiles, the patented I-Beam interlock and XCR Manufacturing technologies are just a few of the reasons CMI sheet piling has been used successfully by engineers and contractors for over 25 years.

#### PILECLAW MANDREL

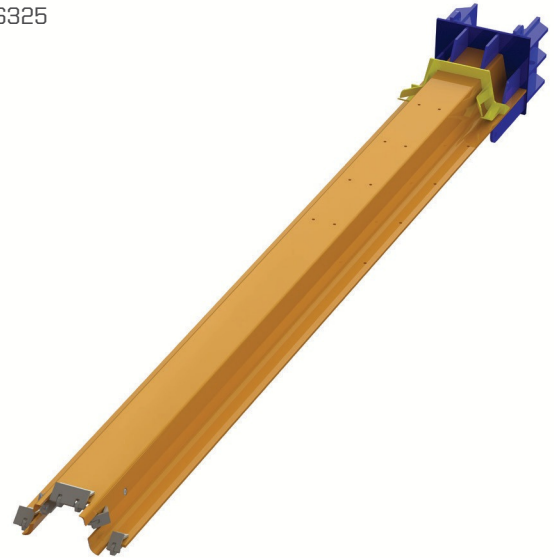
CMI's Mandrel technology incorporates patented features that help it deliver superior results. The Mandrel can be used with a variety of traditional driving equipment including cranes, excavators and fixed-mast pile drivers. CMI has specifically fabricated the Mandrel to work with multiple CMI profiles and sheet lengths.

Model: PCS325

PCS625

PCS825

PCU50



#### PILECLAW DRIVEGUIDE

Further enhancing the capabilities of the PileClaw Installation Equipment is the DriveGuide. With an adjustable width, DriveGuide™ can work for a variety of our sheet pile profiles. The DriveGuide assists in keeping the sheets aligned and plumb during installation and helps keep the walls straight, resulting in a better overall finished product. When used in conjunction with the PileClaw Mandrel, DriveGuide also aids in keeping the sheet pile in the ground during mandrel extraction, increasing the rate of installation. DriveGuide is also color coded for easy on-site assembly.

Model: DG20



## PileClaw Installation Equipment

### Maximum Sheet Length (ft)

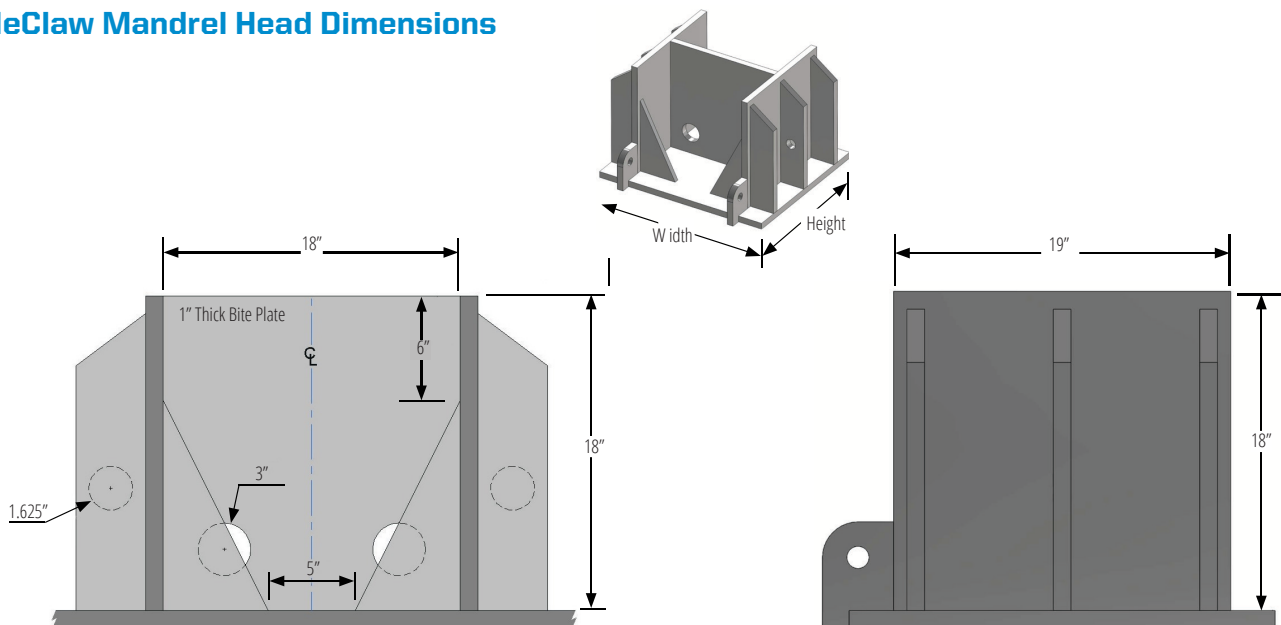
15	20	25	30	35	40
----	----	----	----	----	----

### PileClaw® Mandrel Overall Length (ft)

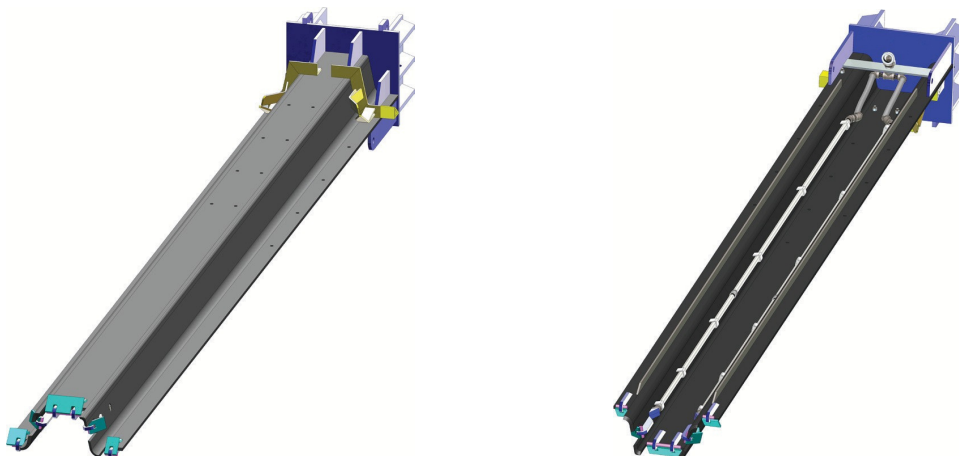
18.5	23.5	28.5	33.5	38.5	43.5
------	------	------	------	------	------

Standard PileClaw® Mandrel	Width (in)	Height (in)	Approximate Weight (lb)					
PCS325	28	26	2,200	2,700	3,000	3,500	3,900	4,400
PCS625	34	26	3,100	3,700	4,400	5,000	5,700	6,300
PC825	34	26	3,200	3,900	4,600	5,300	6,100	6,800
PCU50	40	26	3,300	4,000	4,800	5,500	6,200	6,900

### PileClaw Mandrel Head Dimensions



### PileClaw Mandrel Front and Back View



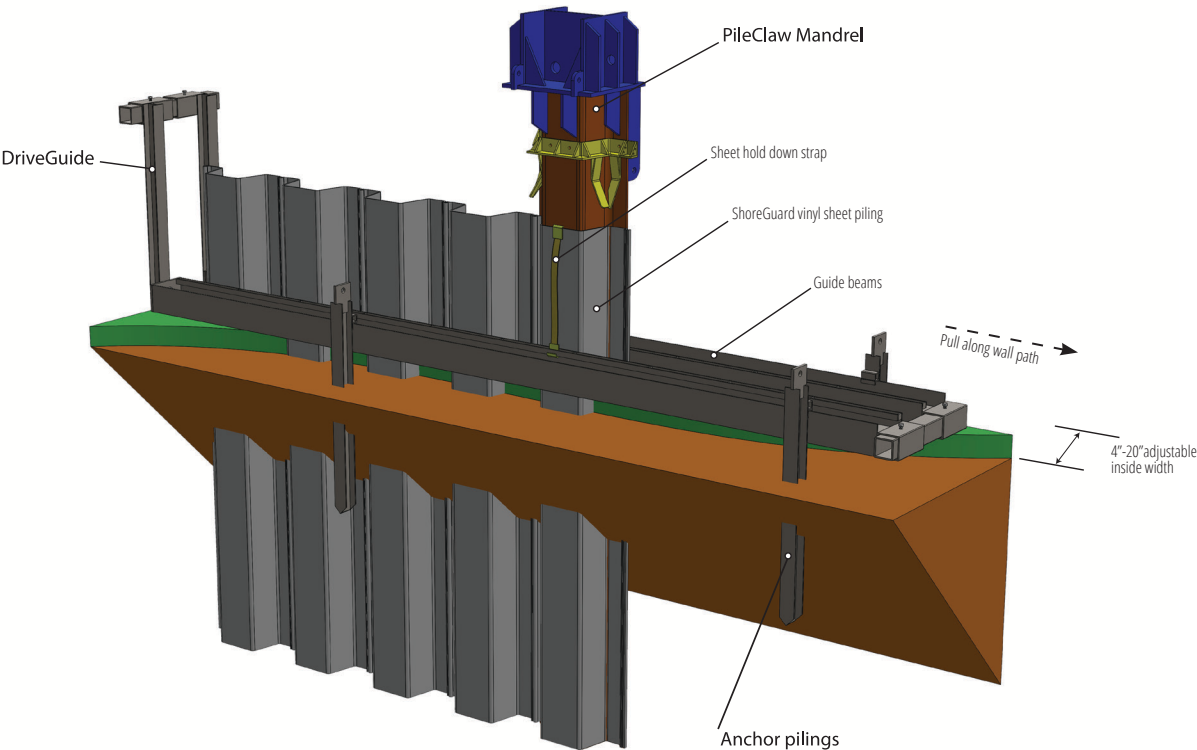


# PileClaw

Installation Equipment

PileClaw® DriveGuide	Inside Width (in)	Height (in)	Length (in)	Weight (lb)
DG20	32" - 52"	6'	20'	2,000

PileClaw DriveGuide- Easy on site assembly



PileClaw DriveGuide Front and Side View

