



**ShoreGuard**  
Synthetic Sheet Piling



**PROTECTING**  
YOUR SHORELINE







# BUILD IT ONCE, **BUILD IT RIGHT**

Whether you are building a new seawall or replacing an old one,  
it's an investment in your property that should last.



## THE VALUE OF A SHOREGUARD WALL



### Customizable

With a wide range of profiles, colors and textures, design options are endless.



### Sustainable

ShoreGuard sheet piling is made from over 90% recycled material and is 100% recyclable.



### Hassle-Free

ShoreGuard is impervious to deterioration from weather, corrosion, and marine borers that plague conventional materials.



### Warrantied

ShoreGuard's 50 year warranty is backed by CMI, the industry leader for over 30 years.



Engineered For Beauty And Brawn

# THE SCIENCE OF SHOREGUARD VINYL SHEET PILING

Invest in a product with proven performance and a long history. ShoreGuard synthetic sheet piling is the most trusted and widely used brand of sheet piling in the world.

## XCR Technology

Manufactured in the only facility dedicated solely to the production and technological advancement of vinyl sheet piling.

## I-Beam Lock

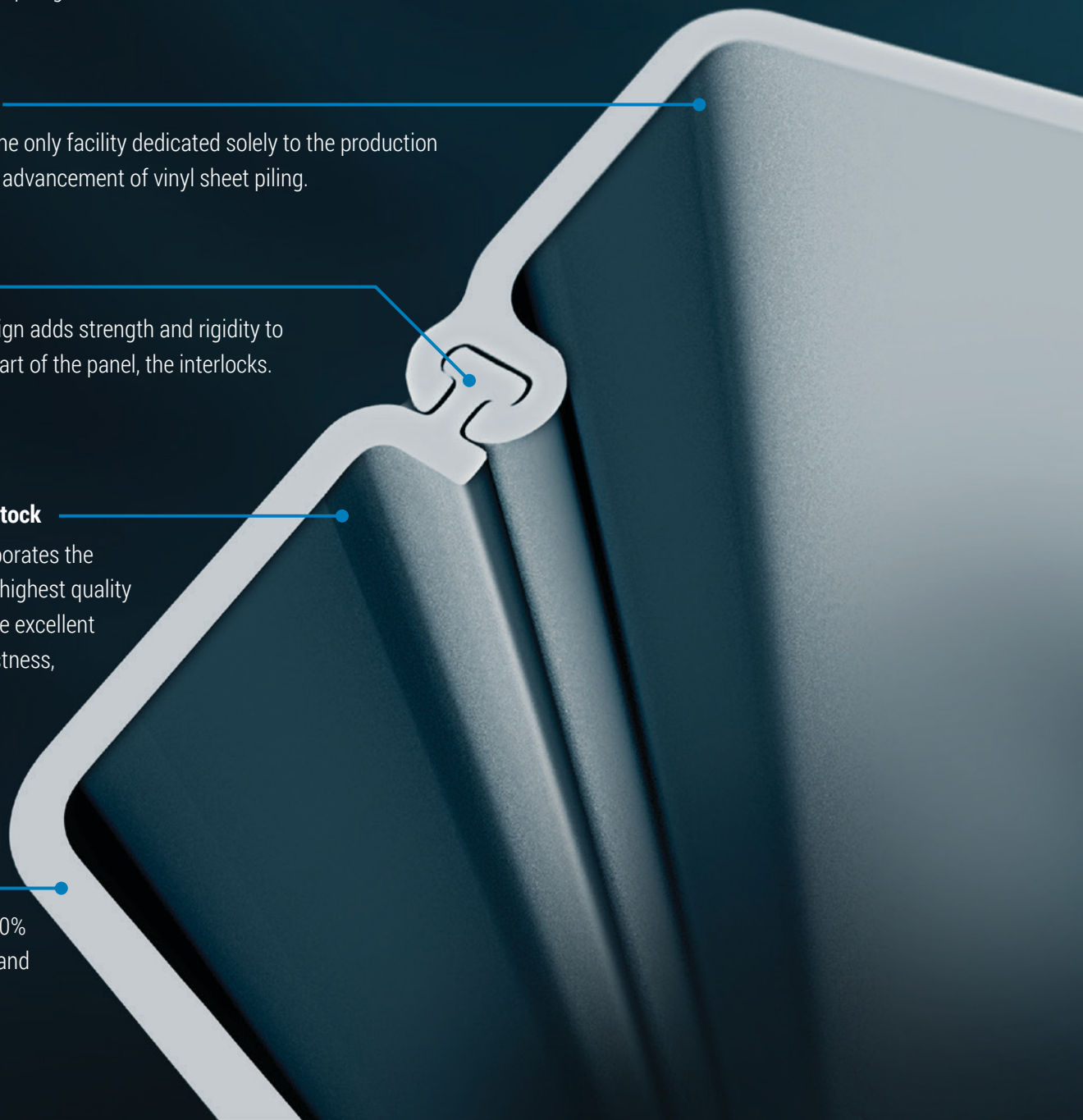
This patented design adds strength and rigidity to the most critical part of the panel, the interlocks.

## 100% Virgin Capstock

Shoreguard incorporates the most durable and highest quality materials to ensure excellent durability, colorfastness, and resistance to the elements.

## Eco-Friendly

Made From over 90% recycled material and 100% recyclable.





# DEFINE YOUR STYLE

## Enhance The Look Of Your Home

Reflect the interior style of your home into your outdoor space. Craft a seawall as beautiful and lasting as the memories you create on the water.







## ShoreGuard

Synthetic Sheet Piling



### FlatPanel Profile:

The newest development in vinyl sheet pile technology emulates the look and feel of wood or textured concrete with the same longevity of traditional corrugated sheet piling.



Woodgrain  
Brown



Woodgrain  
Green



Textured  
Grey



### Corrugated Profile:

This classic synthetic sheet pile look optimizes performance and economy.



Grey



Clay



Brown



Slate

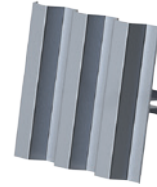


## ArmorWare

Components and Accessories

Created specifically to pair with ShoreGuard vinyl sheet piling, the ArmorWare line of products provides the same quality and performance you can expect from CMI.

**Anchors:** Prevent premature failure of your seawall with our DMA anchors, constructed from marine grade aluminum for added longevity.



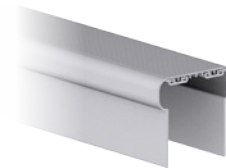
Shown:  
DMA 9

**Tie Rods:** ArmorWare Tie Rods outlast traditional steel tiebacks in marine environments. Select from our polymer coated steel or mill-finish aluminum options.



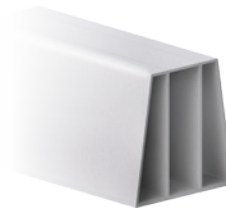
Shown:  
1" Coated Steel Tie Rod

**Capping:** ArmorWare corrosion resistant caps create a sleek, finished look with low-maintenance sensibility. Available in a range of materials, finishes and colors.



Shown:  
VersaCap in Grey

**Wale Beams:** Extend the height of your seawall with ArmorWare Wale Beams. Engineered to stand up to wave action, UV exposure and other environmental impacts.

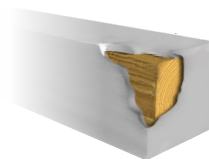


## TimberGuard

Marine Piling and Timber

### TimberGuard:

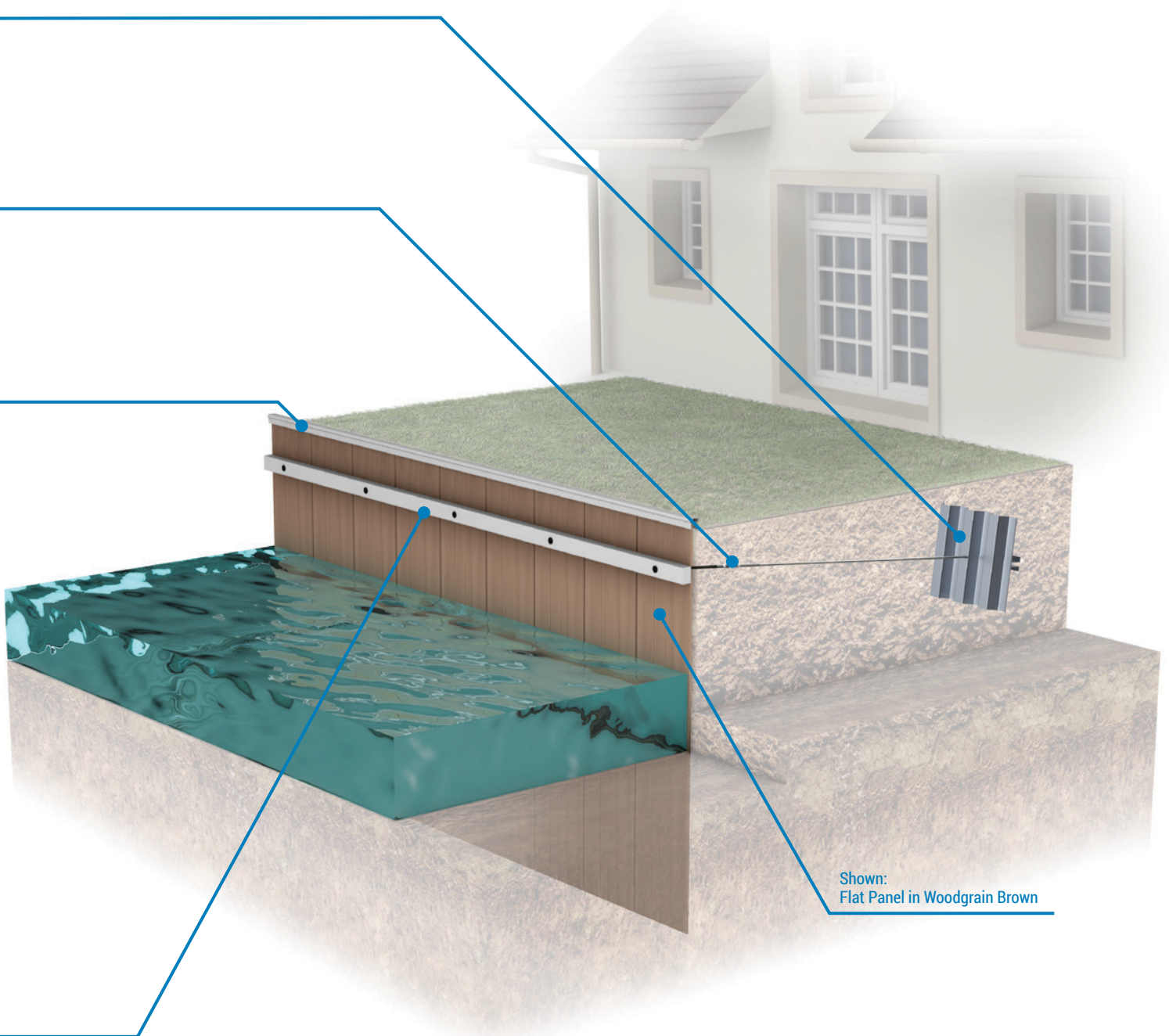
A cost-effective, longer-lasting alternative to treated wood. TimberGuard's unique polymer encapsulation extends the service life of wooden components. Available in a wide variety of round timber piles and lumber.



Shown:  
6x8 TimberGuard  
Drop Wale in Grey

# COMPLETE PROTECTION

A wall is only as strong as it's weakest component. CMI's complete seawall system is designed to extend the long-life, durability and aesthetics of ShoreGuard to all wall components.



Shown:  
Flat Panel in Woodgrain Brown

Build Your Own Seawall in 3D at  
[www.cmiwaterfront.com](http://www.cmiwaterfront.com)



# ShoreGuard

Synthetic Sheet Piling

